

The FL-700/710 floor box is designed for conference rooms, auditoriums, classrooms, etc. where it may be necessary to pass cables thru the box without interfering with the various connectors. This simplifies installation of wiring when a group of boxes must be connected in series. The pass-thru route is front-to-back. The FL-700/710 water-tight carpet-trim cover is used with carpeted floors over concrete. This floor box provides a practical and safe solution for easy access to cables and connector plates. The lift-off section of the cover allows full access to internal cables and connector plates while a smaller, hinged trapdoor flips back to create a cable exit. All cables can be stored within the box when they are not in use, allowing unencumbered travel across the floor in the area of the FL-700/710.

**Before proceeding with the installation please take time to review the photos on the opposite side of this page.**

**Step 1**

Locate the box, complete with the temporary cover, on the floor structure. Remove the temporary cover, spacer angles, and insert plate. Connect all conduits as required. Reinstall the temporary cover, spacer angles and insert plate. Use the leveling feet to position the box such that the top of temporary cover is flush with the surface of the concrete floor.

**Step 2**

After the concrete floor is cured, remove the temporary cover, spacer angles, and insert plate. Install all the cables and connector plates as required. Reinstall the insert plate, spacer angles, and the temporary cover.

**Step 3**

Prepare to install the finish cover. Remove the temporary cover and spacer angles and discard them. Locate and carefully separate the outer and inner door ring gaskets.



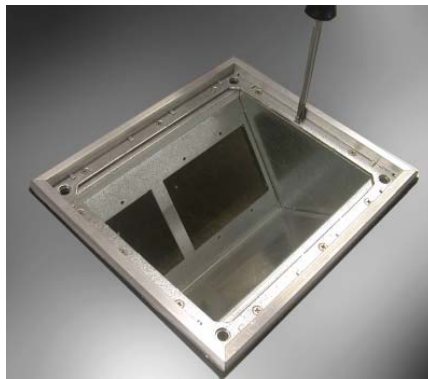
**Step 4**

Apply the outer gasket to the bottom of the outer door trim ring, covering the trim screws, and ending up with an 1/8" overhang on the outer edges. Do not stretch the gasket while installing. The gasket should just touch the edge of the attachment screw holes.



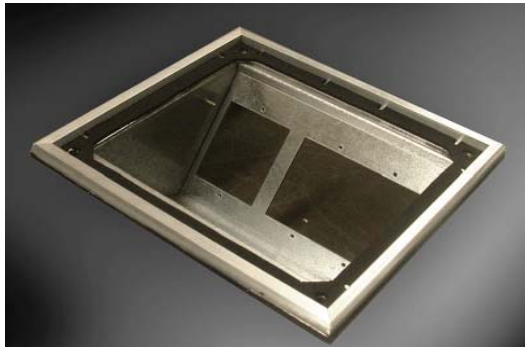
### Step 5

Place outer door trim ring on top of the mounting plate insert and install all the screws. Use an alternate corner pattern to tighten.



### Step 6

Install the inner gasket over mounting screws. Do not stretch the gaskets while installing.



### Step 7

Install the chain between the insert and the inner cover.



### Step 8

Place the inner cover on the housing and press firmly on the center to form the new gasket. Turn the four-quarter-turn cover screws clockwise to secure the cover.

**Step 9 Make sure all of the screws are completely seated to avoid a "trip" hazard.**

