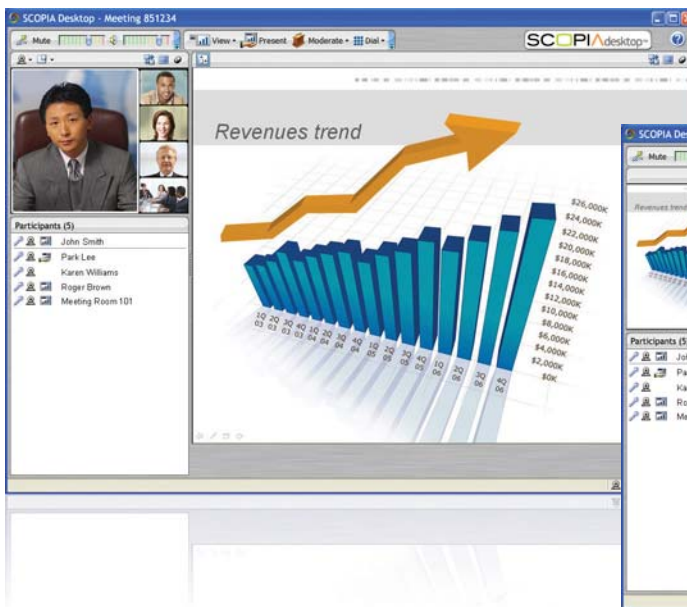


SCOPIA™ Desktop

Easily connect remote employees and external partners to your existing video network for voice, video and data communications



Extend the Reach of Your Existing Video Network

With SCOPIA Desktop, your video network is accessible to any member of your organization. Team members can collaborate regardless of their chosen device: a high end room conferencing system, a laptop in a small branch office or a teleworker's personal computer. For larger audiences, use SCOPIA Desktop's built-in streaming capabilities to reach out to hundreds of users.

Collaborate Effectively with Business Partners

Simply send a Web link to business partners inviting them to participate in a high end video conference. SCOPIA Desktop's built-in firewall traversal ensures call connectivity regardless of your partner's firewall configuration.

Enjoy High Quality Video, Audio and Data on any Computer

By utilizing RADVISION's state-of-the-art audio and video hardware processing, each participant is assured a dedicated high quality, low bitrate audio/visual experience.

Common Experience for All Participants

Whether connected from a high end conference room or a remote laptop, all users get the same conference features like Continuous Presence video, H.239 data collaboration, PIN protected meetings and conference moderation.

Say Goodbye to Expensive Deployment Costs

SCOPIA Desktop uses a freely distributable, state of the art Web client. There are no client software fees, complex installations, license provisioning or software upgrades.

SCOPIA Desktop Product Specifications

Client Connectivity Modes

- Live connection (Audio, Video, Data) for interactive participants
- Data only connection with moderation capabilities and optional call back
- Streaming mode for non-interactive participants

Data Collaboration

- H.239 based data collaboration built into the client
- Room system-friendly data collaboration format (H.263+ XGA)
- Data shared from a room system visible in all other rooms & on desktops
- Data shared from a desktop visible on all other desktops and in rooms
- Share the entire screen or specific applications

Layout Selection

- Video or data focused
- Side-by-side video and data
- Full screen video or data

User Controls

- Mute/un-mute
- Stop/pause/start video
- Turn on/off local self view
- Choose your video layout (active speaker or continuous presence)¹
- Have the system call my voice or video number (callback)¹
- View consolidated conference roster (desktops and rooms)
- DTMF keypad

Moderator Controls

- Acquire moderation rights (may require moderator PIN)¹
- Lock meeting¹
- Terminate meeting
- Invite any room system or phone (dial-out)¹
- Start/stop streaming
- Mute, un-mute and disconnect any participant¹

Meeting Types

- Un-moderated meetings - Anyone can control the meeting
- Moderated meetings - Moderator PIN required to control the meeting

Built-In NAT and Firewall Traversal

- Traverses local and remote firewall to ensure connectivity
- Automatically handles local and remote NAT private networks
- Automatic detection of optimal media path: UDP, TCP or tunneled TCP

Built-In Streaming

- Built-in streaming server supports 'watch only' participants
- Simultaneous streaming of audio, video and data channels

Security

- SRTP encryption to ensure the privacy of media and signaling between SCOPIA Desktop client and server
- Waiting room capability - Meeting will not start until moderator joins^{1, 2}
- Pre-defined virtual rooms - Optional mode where only pre-defined virtual rooms can be used for meetings¹
- The Callback feature can be optionally disabled to avoid misuse by meeting participants

Scheduling and Reservation

- Outlook plug-in for easy meeting scheduling
- Web based meeting scheduling from any browser¹
- Port can be reserved assuring availability for critical meetings¹

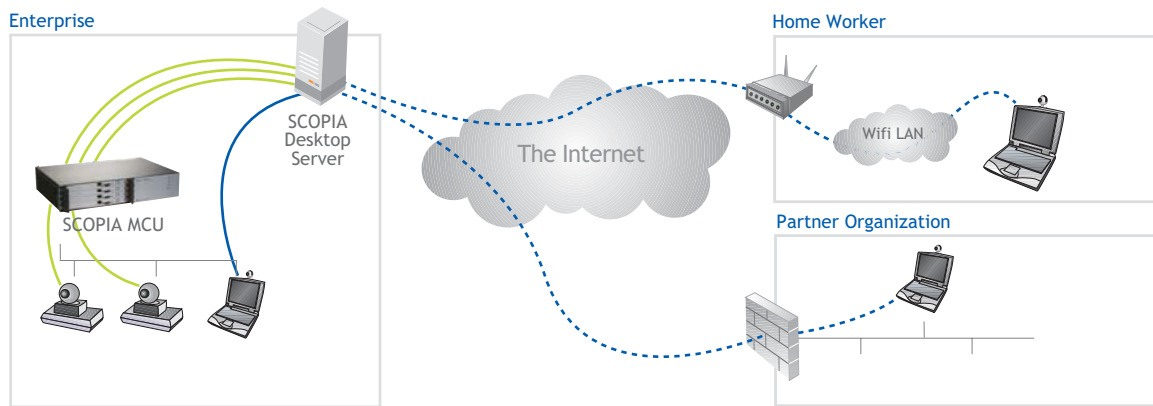
Client Computer Requirements

- Operating System: Windows® XP, Windows® Vista™, MAC® OS-X³
- Browsers: Internet Explorer® 6 or 7, Firefox®⁴, Safari™⁴

Server Requirements

- Operating System: Windows® 2003 Enterprise Edition
- Up to 25 connections: Dual Core Pentium® D 915 running at 2.8GHz with 800MHz FSB, 2GB RAM and 20GB DISK. Can be installed on the same server as iVIEW™ Suite 25
- Up to 50 connections: Dual Core Xeon running at 1.86GHz, with 1066MHz FSB, 4GB RAM and 20GB DISK. Can be installed on the same server as iVIEW Suite 50
- Up to 100 connections: Intel® Dual Core Xeon™ 3.0 GHz with 8GB RAM and 20GB DISK. Requires a dedicated server

Sample Deployment



¹ When working in conjunction with iVIEW Suite

² Will require a software upgrade

³ MAC OS-X supports conference watching only. Intel based CPU required for data viewing

⁴ Safari and Firefox browsers support conference watching only

More detailed information on RADVISION products is available from RADVISION sales agents or VARs, or by visiting our website at www.radvision.com

Product specifications subject to change without notice. This document is not part of a contract or license as may be expressly agreed. RADVISION, SCOPIA and iVIEW are registered trademarks of RADVISION, Ltd. All trademarks recognized. All rights reserved. © 2007 RADVISION, Ltd. P/N 46008-00075 Rev B 04-07